



iRTC Project Assessment

Make Your iRTC Goals a Reality with Frozen Mountain's iRTC Project Assessment



Professional Services

Most of our customers use IceLink and/or WebSync to provide Internet Based Real Time Communications (iRTC) capabilities. Some of our customers also ask us to provide assistance with implementing these applications through our Professional Services department, or ask us to assist early in the process to develop an estimate for the cost of their iRTC application project.

It's difficult to know the true costs of an iRTC project without more knowledge of your application, the application's environment, and your overall goals. For this purpose, we often suggest that customers looking to embark on a new iRTC project carry out an iRTC Project Assessment with Frozen Mountain. We've found this assessment is extremely valuable to our customers so that both parties fully understand the needs and costs associated with a new project. The assessment typically takes between 3-5 days, and costs range from \$3,000 - \$5,000 depending on the length of the assessment.

An iRTC Project Assessment will provide you with answers to the many questions that surround incorporating iRTC into your environment, as well as providing a reasonable cost estimate for the entire project - both of which are important factors for your decision making process. Frozen Mountain's benefit of the assessment is that we obtain sufficient information about your project to develop a reliable project plan, including time and cost estimates for the iRTC implementation.

Whether you decide to use our Professional Services staff, do the project yourself, or use a 3rd party, the iRTC Assessment will supply you with the best iRTC architecture and phase details for implementation.

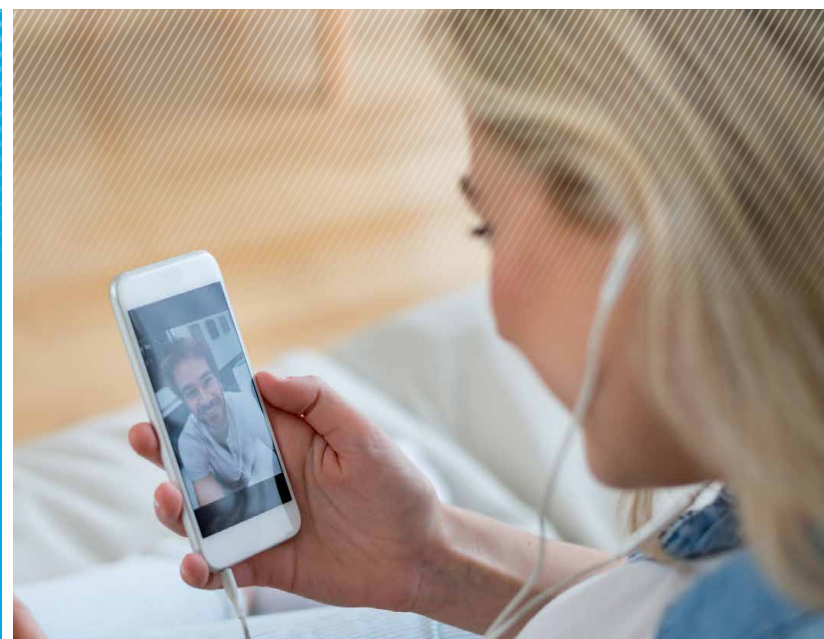
BENEFITS OF AN RTC PROJECT ASSESSMENT

Provides you with answers to the many questions that surround incorporating iRTC into your existing environment

Outlines the best iRTC architecture for your project

Contains a high level project plan with phase details for implementation

Provides an educated cost estimate of your iRTC project



Goals of an iRTC Project Assessment

1. To work with you to gain a full understanding of your functional needs, to discover the overall goals of your iRTC project, and determine how best to incorporate iRTC capabilities.

2. To work with you to understand your current application with a particular attention to:

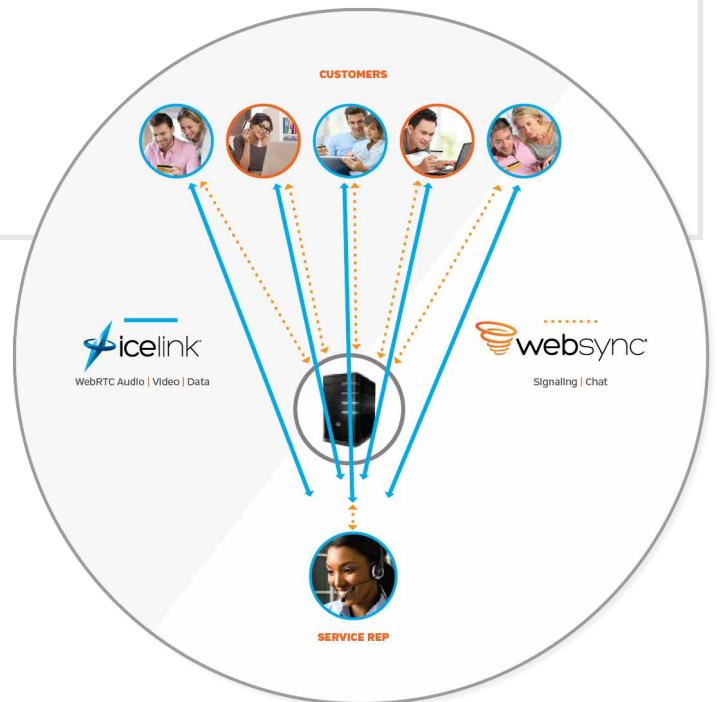
- a. How user management needs to be handled. Does the application already have a mechanism for managing users?
- b. If the application is already making use of any form of RTC, what is being used and how is it being used?
- c. What (if any) 3rd party products are being used that could impact an iRTC implementation?

3. To develop the needed iRTC architecture, which is composed of:

- a. Use of high volume streaming (e.g. IceLink for audio/video) vs. low volume burst traffic (e.g. WebSync for Chat)
- b. Devices involved (e.g. Web, SmartPhones, SmartTablets, SmartGlasses) and which platforms are required (e.g. browser, iOS, Android, Xamarin, etc.)
- c. Directions of iRTC flow (one-way broadcast vs. bi-directional communication)
- d. Volume of users on each flow (e.g. how many users need to be in a conference?)
- e. Need for server vs. mesh network?
 - i. Need for recording server
 - ii. Need for a Selective Forwarding Unit (SFU) server
 - iii. Need for a Multiple Conferencing Unit (MCU) server
- f. Need for any links to non-WebiRTC protocols
 - i. Calls via VOIP using Session Initiation Protocol (SIP)
 - ii. Broadcasting to Content Delivery Networks (CDN) using protocols such as HTTP Live Streaming (HLS)
- g. Need for any additional products?
- h. Where in the current application are the points that are impacted by the new iRTC architecture?

4. To develop a project timeline, which is composed of:

- a. Any logical phases that the project could be broken down into, assuming a SCRUM methodology. Phases may include delivery by platform. (Note: Frozen Mountain always recommends a SCRUM methodology for iRTC projects as quick deliverables are needed to verify functionality, as details for iRTC projects are notoriously difficult to capture in the early stages of specifications.)
- b. Cost estimates to implement each of the phases.



NEED A CUSTOM iRTC SOLUTION?

Contact us to start planning your iRTC project today.

frozenmountain.com

info@frozenmountain.com

1-888-FRZN-MTN (379-6686)

